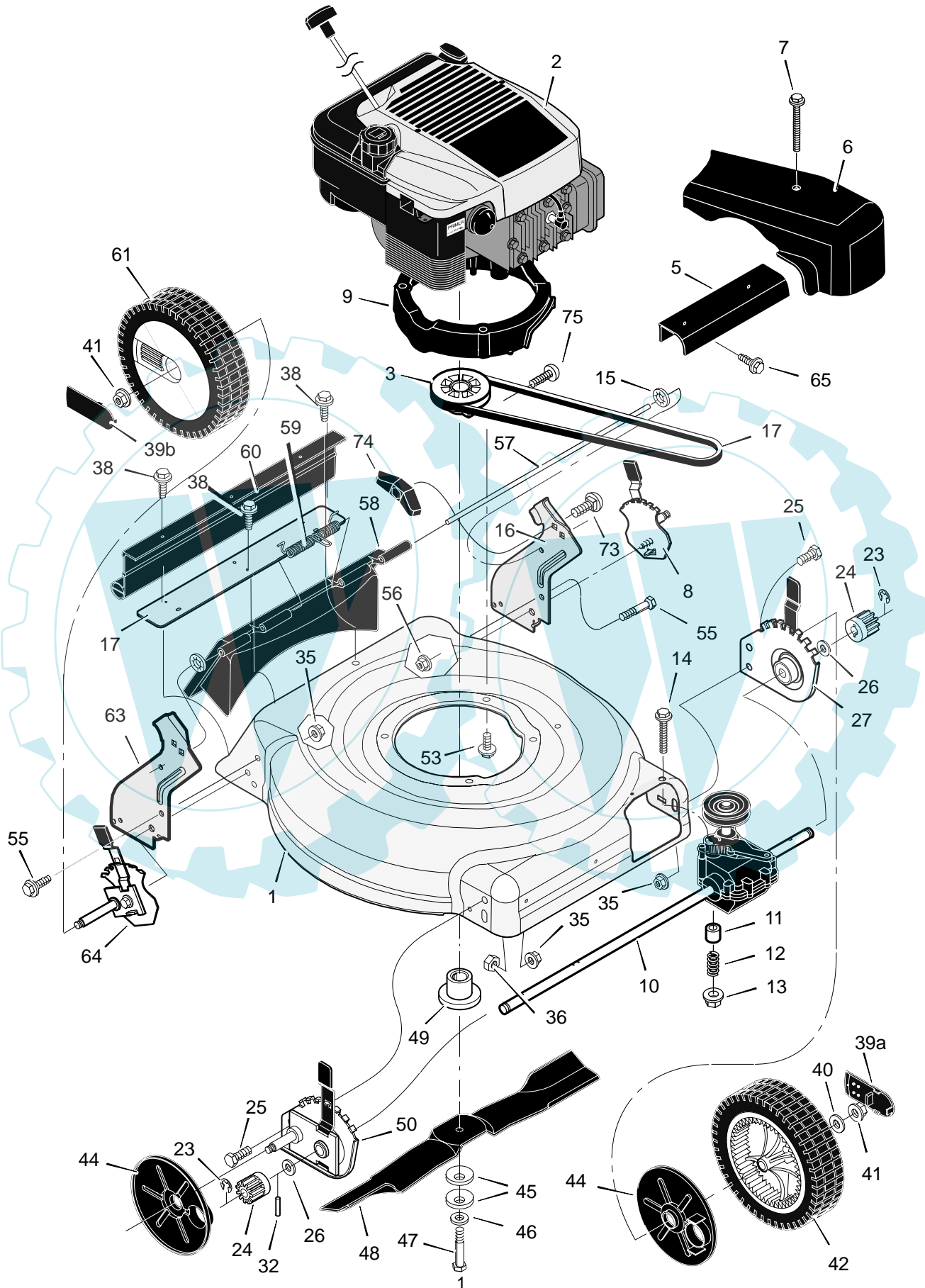


# 20616x50G

## MOWER HOUSING ASSEMBLY



# 20616x50G

## MOWER HOUSING ASSEMBLY

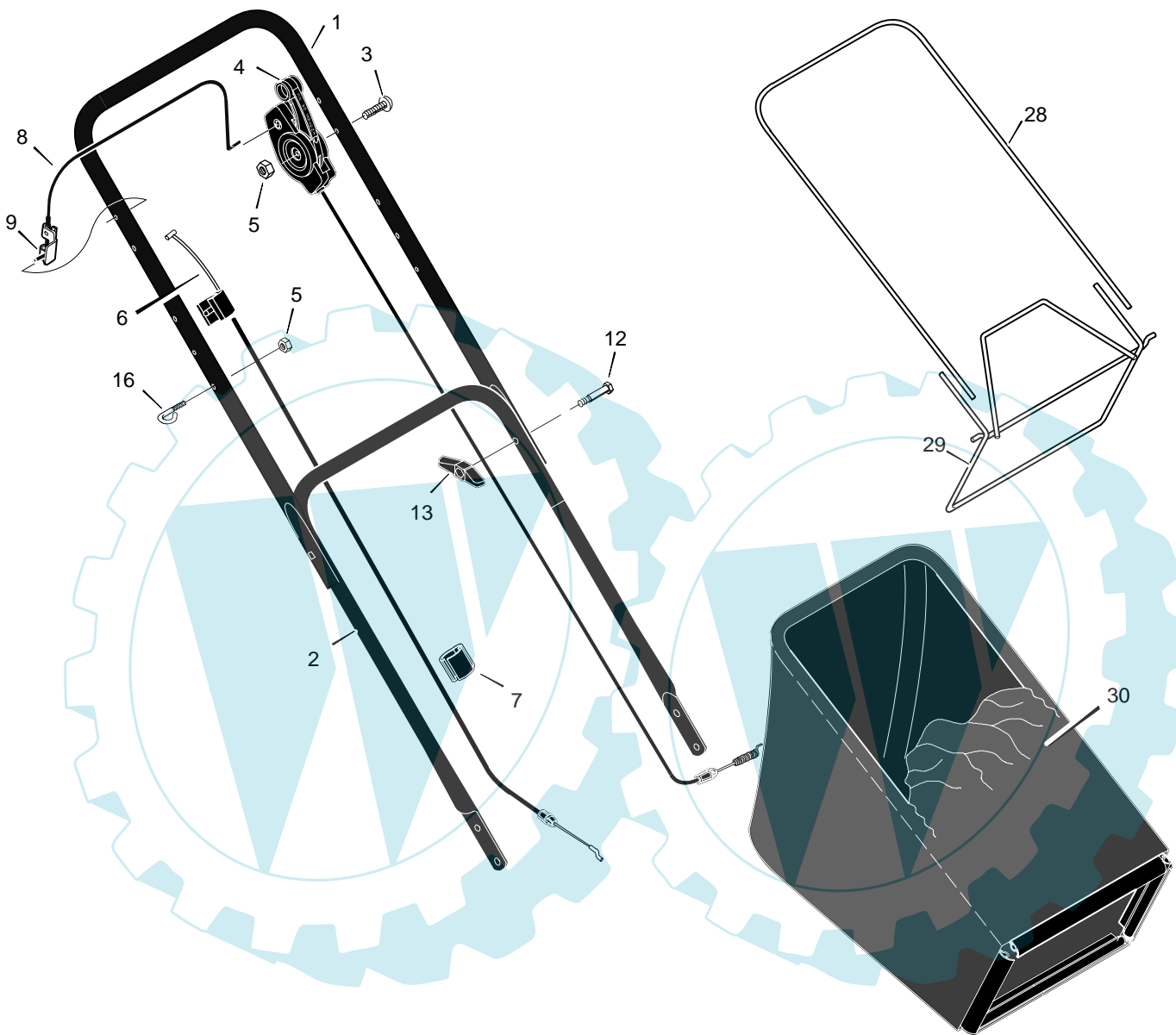
KEY NO.	PART NO.	DESCRIPTION	KEY NO.	PART NO.	DESCRIPTION
1	1102040E701	Housing	39a	043615	Cap, Hub
2	*	Engine *	39b	043847	Cap, Hub
3	1101653	Pulley, Crankshaft	40	17x169	Washer
4	032x64	Pin, Spring	41	015x84	Nut, Flange
5	1101637	Cover, Axle (Gray)	42	071133	Wheel, Drive
6	1101635	Cover, Belt (Gray)	44	071780	Cover, Dust
7	26x304	Screw	45	17x137	Washer, Belleville
8	672605	Adjuster, Left Height	46	17x124	Washer
9	1101640	Spacer, Engine	47	01x144	Bolt
10	1101619	Transmission – <b>Note: There are no internal serviceable parts for the transmission.</b>	48	672763E701	Blade
11	043844	Spacer	49	1101336	Adapter, Blade
12	164x27	Spring	50	1101028	Adjuster, Right Frt. Height
13	015x88	Nut	53	025x11	Bolt, Engine
14	01x156	Bolt	55	001x45	Bolt
15	028x49	Retainer, Push +	56	015x79	Nut, Flange
16	1101239E245	Bracket, Left Handle	57	215x17 Z	Rod, Pivot +
17	37x128	Belt	58	672612	Door, Rear (Gray)
18	1102044e245	Extension, Rear	59	166x44	Spring +
23	011x16	E-Ring	60	671970	Deflector, Rear
24	071792	Gear, Pinion	61	071134	Wheel, Rear
25	001x85	Bolt	63	1101238E245	Bracket, Right Handle
26	17x186	Washer	64	672604	Adjuster, Right Height
27	1101029	Adjuster, Left Frt. Height	73	002x81	Bolt, Carriage
32	043629	Pin, Drive	74	071495	Knob
35	015x68	Nut, Flange	75	26x303	Screw
38	26x245	Screw	—	F-040422L	Instruction Book

\* For information on Replacement Parts for this engine contact the manufacturer.

+ These parts are included with Key 58.

# 20616x50G

## HANDLE & BAG ASSEMBLY



KEY NO.	PART NO.	DESCRIPTION
1	1101555E724	Handle, Upper (Gray)
2	672874E724	Handle, Lower (Gray)
3	025x14	Bolt
4	1101678	Cable, Drive
5	15x116	Locknut
6	1101183	Cable, Stop
7	1101353	Fastener, Cable
8	672878E701	Engine Stop Lever

KEY NO.	PART NO.	DESCRIPTION
9	1101454	Bracket, Stop Lever
12	002x77	Bolt
13	071294	Knob
16	071530	Guide, Rope
28	071592	Frame, Top
29	672905	Frame Assembly
30	1101032	Bag, Cloth